



Britanie Ridge Estates: *Rural Living Redefined*



Britanie Ridge Estates is just minutes from Parker, Castle Rock and the Tech Center and offers the best of country living with the amenities of urban life. Pick one of our luxury home plans or bring your own; either way we'll bring your rural living dreams to life!

- 5 Acre Lots
- A Few Treed Lots Still Available
- Lots on Rolling Hills & Pikes Peak Views
- Paved Roads
- Community Water

Featuring

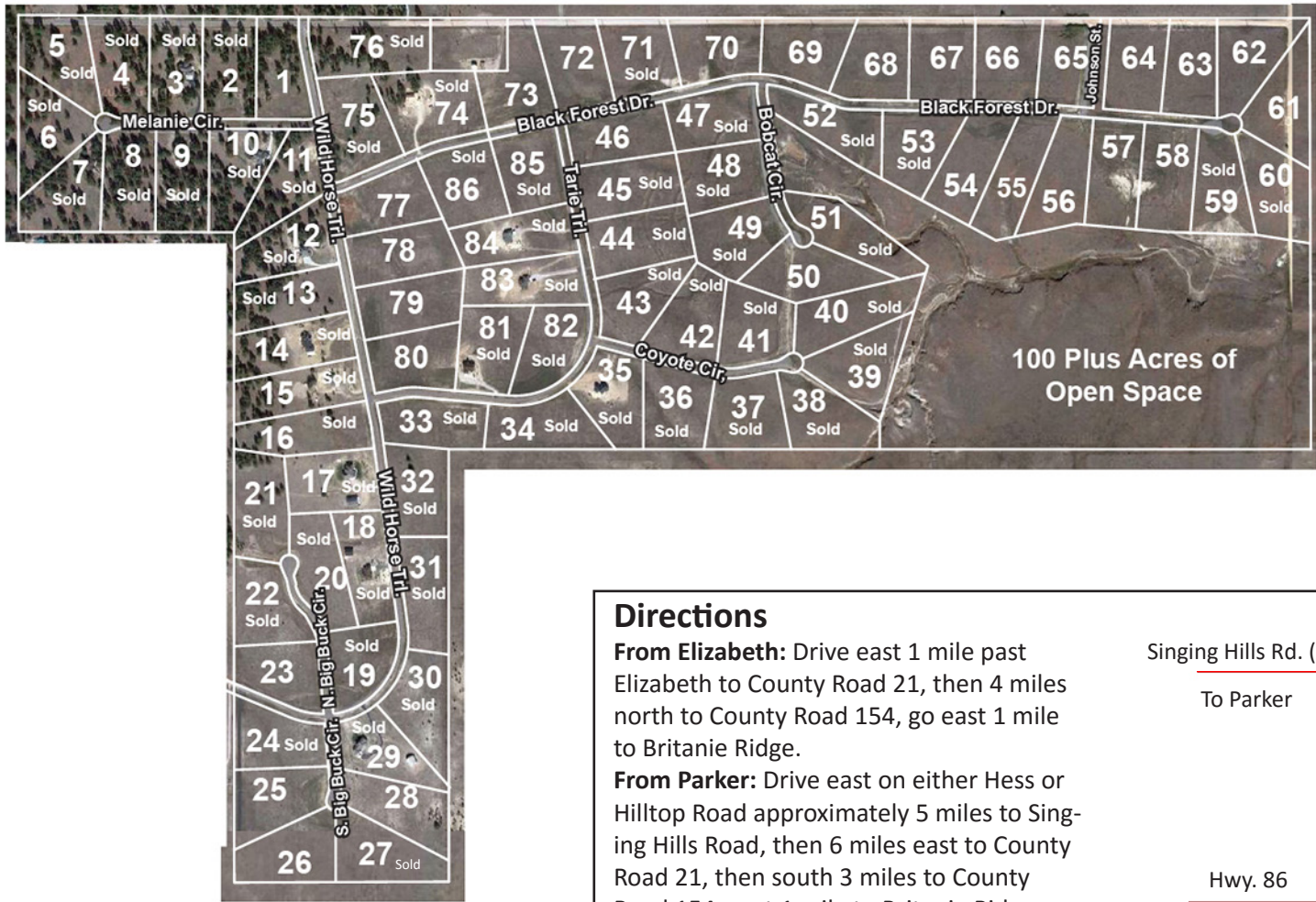
- Elizabeth Schools
- Natural Gas, Phone & Power to Lots
- Horses allowed
- 100 plus acres of open space



SunWestCo.com • BritanieRidgeEstates.com

Hurry!
We still have a few mature Ponderosa Pine treed lots available!

See available lots →



Directions

From Elizabeth: Drive east 1 mile past Elizabeth to County Road 21, then 4 miles north to County Road 154, go east 1 mile to Britanie Ridge.

From Parker: Drive east on either Hess or Hilltop Road approximately 5 miles to Singing Hills Road, then 6 miles east to County Road 21, then south 3 miles to County Road 154, east 1 mile to Britanie Ridge.

For more information on SunWest Homes available floorplans, go to SunWestCo.com/FloorPlans. Like something different? Talk to us about modifying one of our plans or bring your own and we'll build to suit your needs.

SunWestCo.com • BritanieRidgeEstates.com
(303) 688-7533 • P.O. Box 1869 • Elizabeth, CO • 80107

